



# Deep Dive: Climate, Green & Circular Economy

PIXEL : IoT For Environmental Leverage  
MARC DESPLAND, Solution Architect, ORANGE



# Measure environmental impact of ports

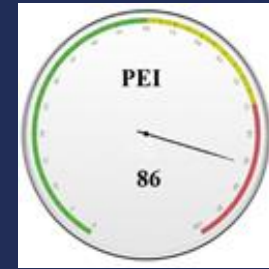
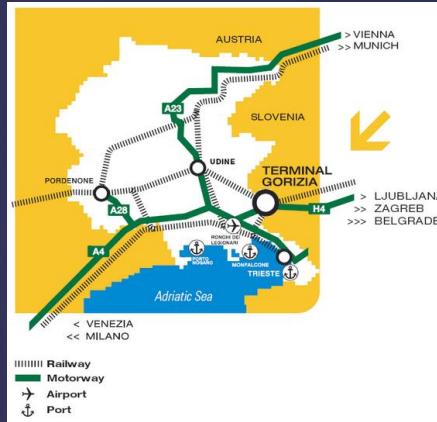
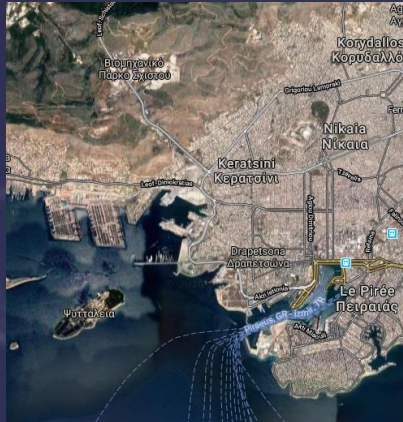
## H2020 European Founded project

- **16 Partners**
- **4 Ports**
- **End September 2021**

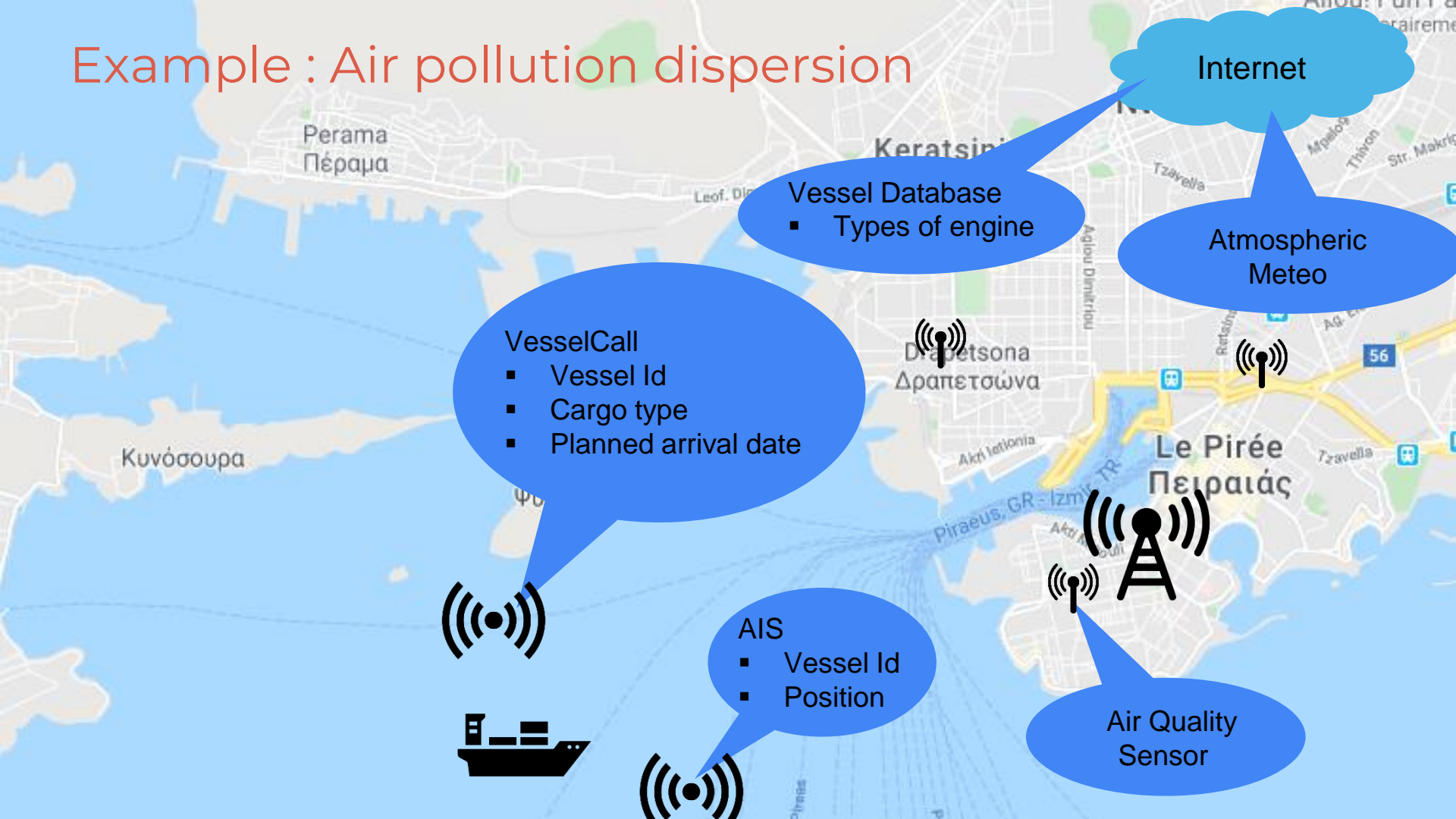


# The Use Cases

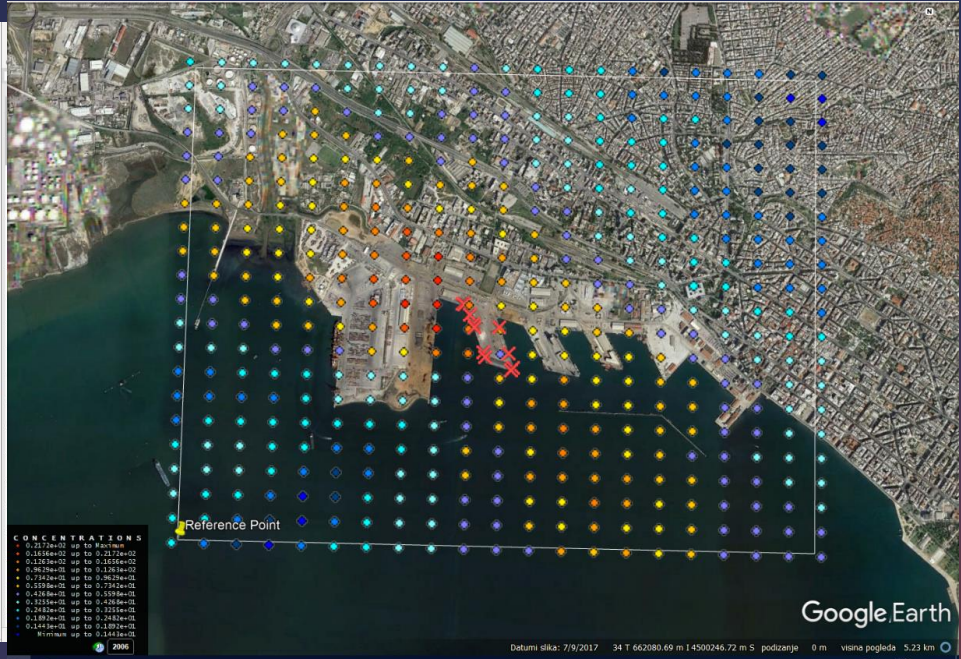
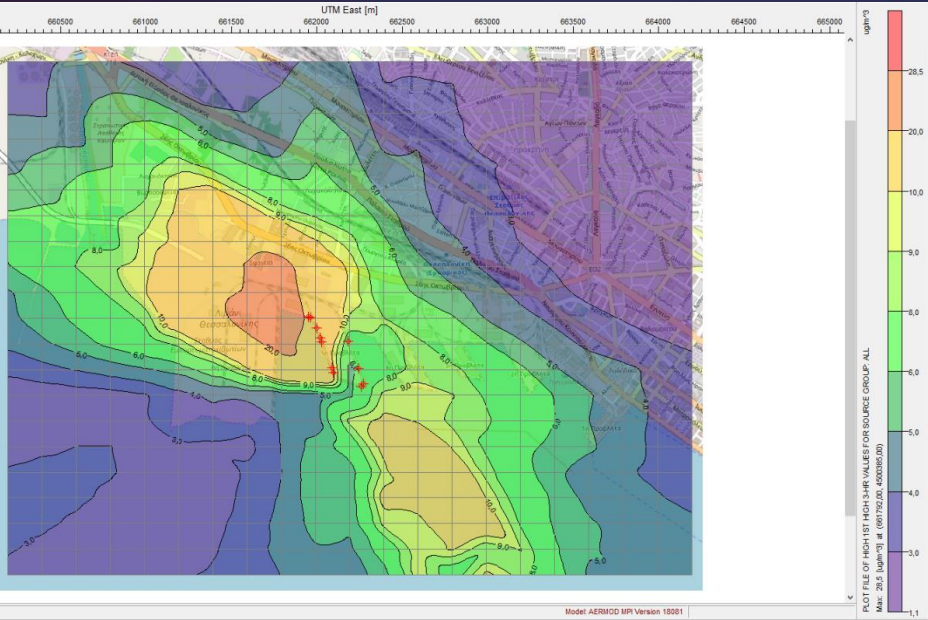
- **PEI : Port Environmental Index**
- **Multimodal transport**
- **Port-city close integration**
- **Energy management**



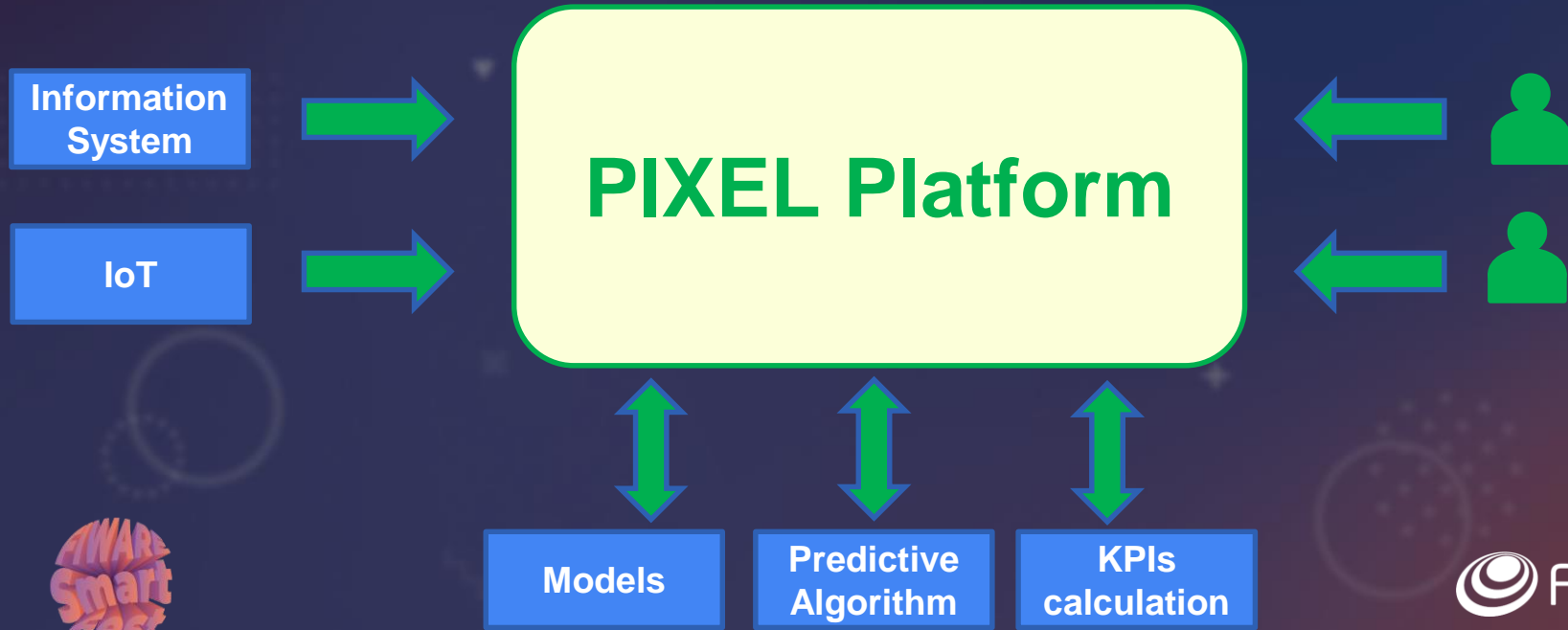
# Example : Air pollution dispersion



# Example : Air pollution dispersion



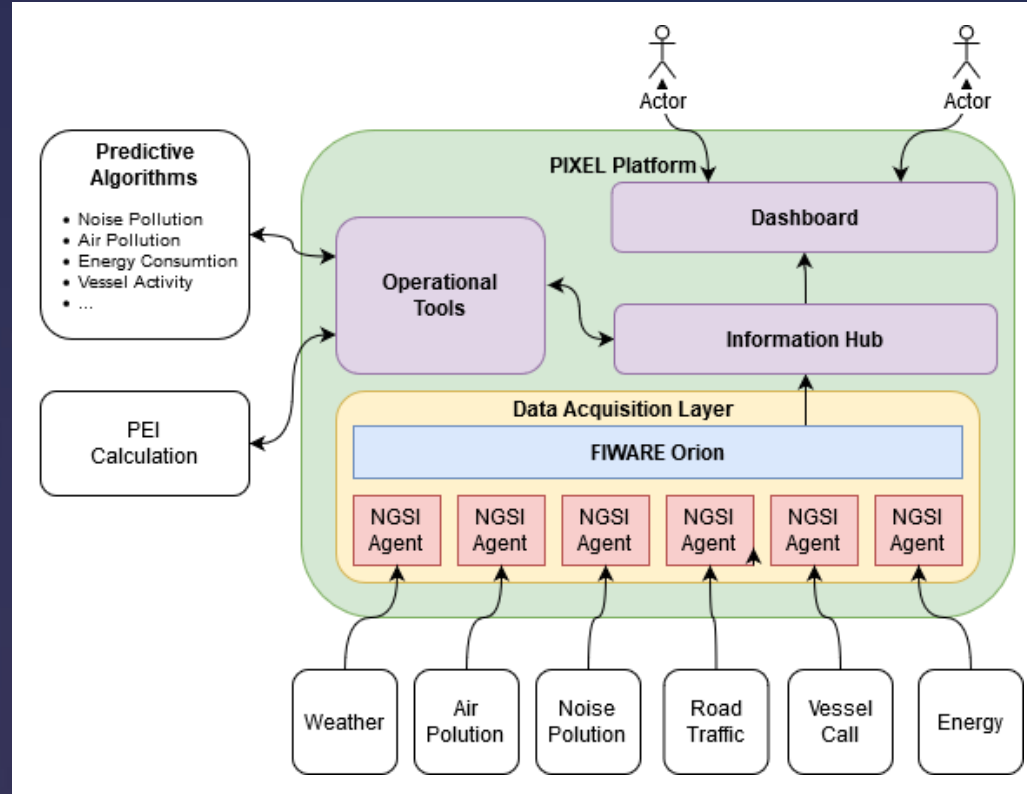
# A sustainable and dedicated platform



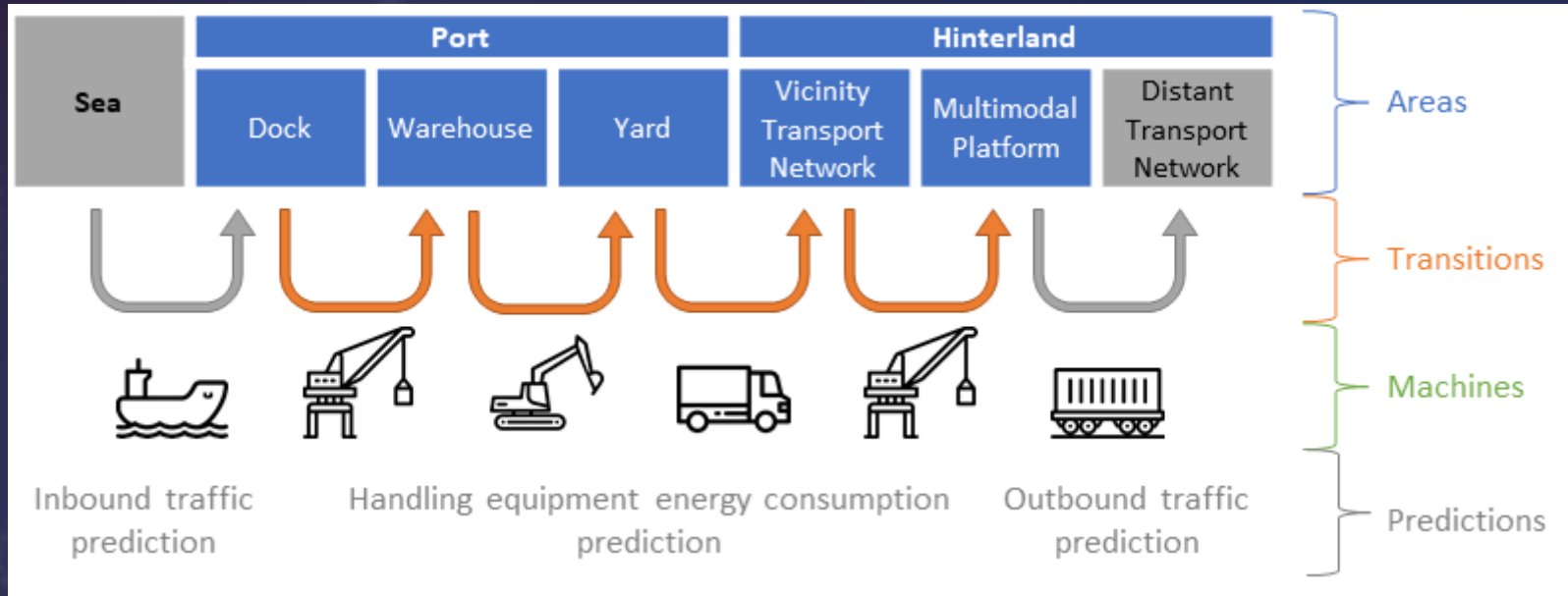
# A sustainable and dedicated platform



<https://github.com/Orange-OpenSource/pyngsi>



# Port Activity Scenario





# THANK YOU!

[marc.despland@orange.com](mailto:marc.despland@orange.com)

<https://pixel-ports.eu>

## MEDIA PARTNERS

BUSINESS REPORTER



COMPASSLIST

